

EIGHT

DESIGN LOUISE HEDERSTRÖM, 2018

Louise ville undersöka hur en strikt matematisk form kunde bli organisk utan att dess karaktär försvann. Resultat blev soffbordet Eight med en mjuk oktagonform som fungerar lika bra till både mjukt som stramt möblemang.

UTFÖRANDE

Bordet har fyra ben vilket ger en hög stabilitet trots sitt nätta intryck. Massiv ek, ask, björk, standardfärger, standardbetser på ask och vitpigmenterad ek eller ask. Bordsskivan i färg tillverkas i MDF. Andra utförande efter förfrågan.

ANGE VID BESTÄLLNING

Artikelnummer och utförande.

Louise longed to explore how a strict geometrical form could become organic without losing its intrinsic 'mathematical' character. The result was Eight coffee table – a flowing octagonal design that works equally well in both formal and more relaxed furniture settings.

EXECUTION

Despite its slim silhouette, Eight table stands stable and steady on its four legs. The solid wood table comes in oak, ash, birch, standard stains on ash and white glazed oak or ash. Tables are also available in our standard colors with a tabletop of MDF. Please enquire for details of non-standard finishes.

WHEN ORDERING, PLEASE ENTER

Item number and execution.



ARTIKLAR ITEMS

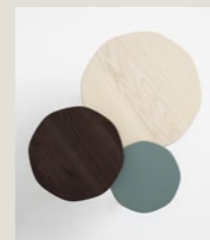


E124
H 525
L 350
W 350

E146
H 575
L 450
W 450

E162
H 480
L 600
W 600

DETALJ DETAILS



TRÄSLAG WOOD STANDARDFÄRGER STANDARD COLORS STANDARDBETSER STANDARD STAINS VITPIGMENT WHITE GLAZED



Bord Table E146 H 580, E124 H 525 | Hylla Shelf SIGN | Klädhängare Coat hanger ponoq



Bord Table E146, E124 | Soffa Sofa FACILE | Hylla Shelf PART

PROVER SAMPLES EIGHT

Tänk på att de tryckta proverna kan skilja sig i färg, struktur och nyans jämfört med levererad produkt.
Keep in mind that the printed samples can differ in color, texture and shades compared with delivered product.

TRÄSLAG WOOD

Ytbehandling är klarlack i glansvärde 18, halvmatt. Alternativa ytbehandlingar olja, olja + lack kan erbjudas.
Treated with clear lacquer in a no. 18 semi-matt finish. Other available finishes are oil or oil + lacquer.



.10 Ek Oak



.20 Björk Birch



.30 Ask Ash

STANDARDFÄRGER STANDARD COLORS

Glansvärde 35, halvblank. Alternativa färger kan erbjudas enligt NCS-skalan.
Semi-gloss no. 35. Other colors are available in accordance with the NCS color system.



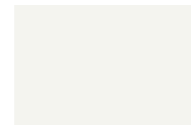
.62 Gul Yellow
NCS S0580-Y



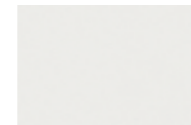
.67 Röd Red
NCS 2070-Y80R



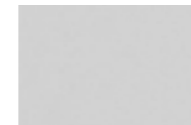
.74 Grön Green
NCS S210-G40Y



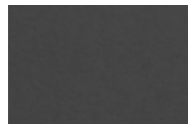
.81 Snövit Snow white
NCS S0500-N



.82 Vit White
NCS 0702-Y04R



.84 Grå Grey
NCS S2500-N



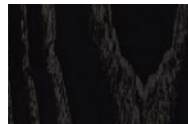
.86 Antracit Anthracite
NCS S7502-B



.58 Svart Black
NCS S9500

STANDARDBETSER STANDARD STAINS

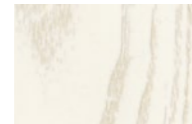
Bets på ek eller ask om inget annat anges. Topplack är klarlack i glansvärde 18, halvmatt. Specialbetsar enligt insänt prov kan erbjudas.
Stain on oak or ash if not otherwise specified. Top coat of clear lacquer in a no. 18 semi-matt finish. Specialist stains in accordance with samples sent to us are also available.



.11 Svart bets
Black stain



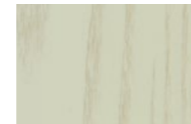
.12 Wenge bets
Wenge stain



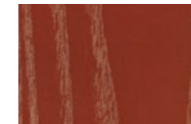
.13 Snövit bets
Snow white stain



.14 Rödbrun bets
Red-brown stain



.15 Grön bets
Green stain



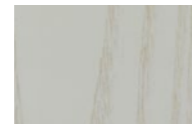
.16 Röd bets
Red stain



.17 Blå bets
Blue stain



.18 Brun bets
Brown stain



.19 Grå bets
Grey stain



.20 Antracit bets
Anthracite stain



.21 Valnöt bets
Walnut stain

VITPIGMENT WHITE GLAZED

Vitpigment på ek eller ask om inget annat anges. Topplack är klarlack i glansvärde 18, halvmatt.
White glazed on oak or ash if not otherwise specified. Top coat of clear lacquer in a no. 18.



.25 Vitpigmenterad ask
White glazed ash



.26 Vitpigmenterad ek
White glazed oak



KARL ANDERSSON & SÖNER
SINCE 1898

HANDMADE IN HUSKVARNA. SINCE 1898.

Karl Andersson & Söner. Rosendalagatan 6, SE-561 34 Huskvarna, Sweden
+46 (0)36 13 25 30. info@karl-andersson.se

Showrooms

Studio B3. Barnhusgatan 3. Stockholm. +46 (0)8 21 42 31
Studio L6. Lasarettsgatan 6. Göteborg. +46 (0)31 13 83 90

karl-andersson.se