



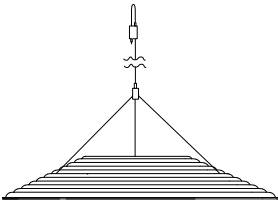
KARL ANDERSSON & SÖNER
SINCE 1898

REVERB

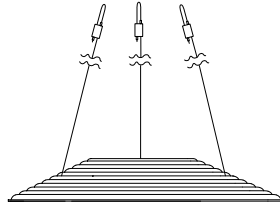
DESIGN JOEL KARLSSON, KROOK & TJÄDER DESIGN 2016

MONTERINGSANVISNING ASSEMBLY INSTRUCTION

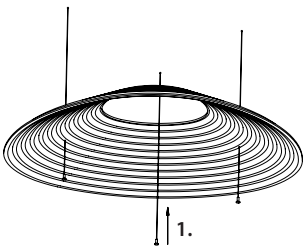
Var noga med att använda lämpligt infästningsbeslag som passar till taket. Karl Andersson & Söner ansvarar ej för upphängningen i tak.
Make sure to use the appropriate mounting brackets for the ceiling. Karl Andersson & Söner take no responsibility for the mounting in the ceiling.



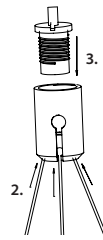
REW1
1 vajer och vajerhus, steg 1-8
1 wire and wire house, step 1-8



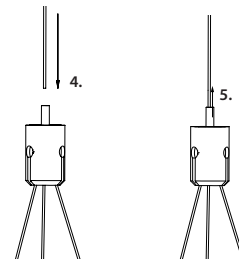
REW3
3 vajrar, steg 1, 6-8
3 wires, step 1, 6-8



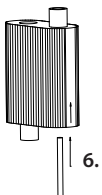
1.
Trä i vajrarna genom hålen i ljudabsorbenten.
Thread the wires through the holes in the acoustic panel.



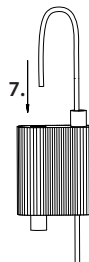
2. För in vajrarna i vajerhuset.
3. Lås fast vajrarna.
2. Insert the wires into the wire house.
3. Lock the wires.



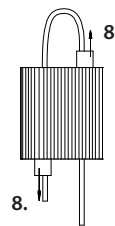
4. Trä i vajern i vajerlåset.
5. Justera längden genom att lyfta fjäderlåset.
4. Thread the wire into the wire house.
5. To adjust the length - lift the spring lock.



6.
För in vajern i hålet enligt pil.
Insert the wire in the hole according to the arrow.



7.
För in vajern i nästa hål.
Insert the wire in the next hole.



8.
För att justera dess höjd, lyft upp fjäderlåset så att vajern lossnar.
To adjust its height.
Lift up the spring lock to release the wire.